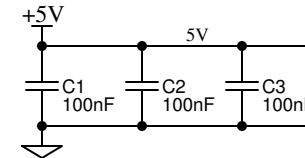
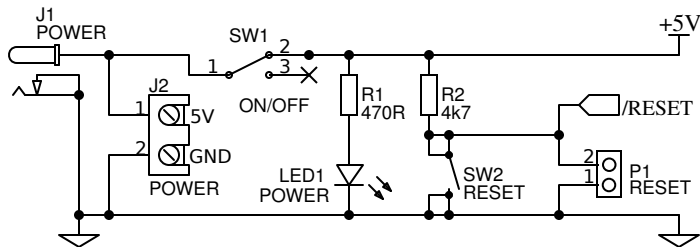
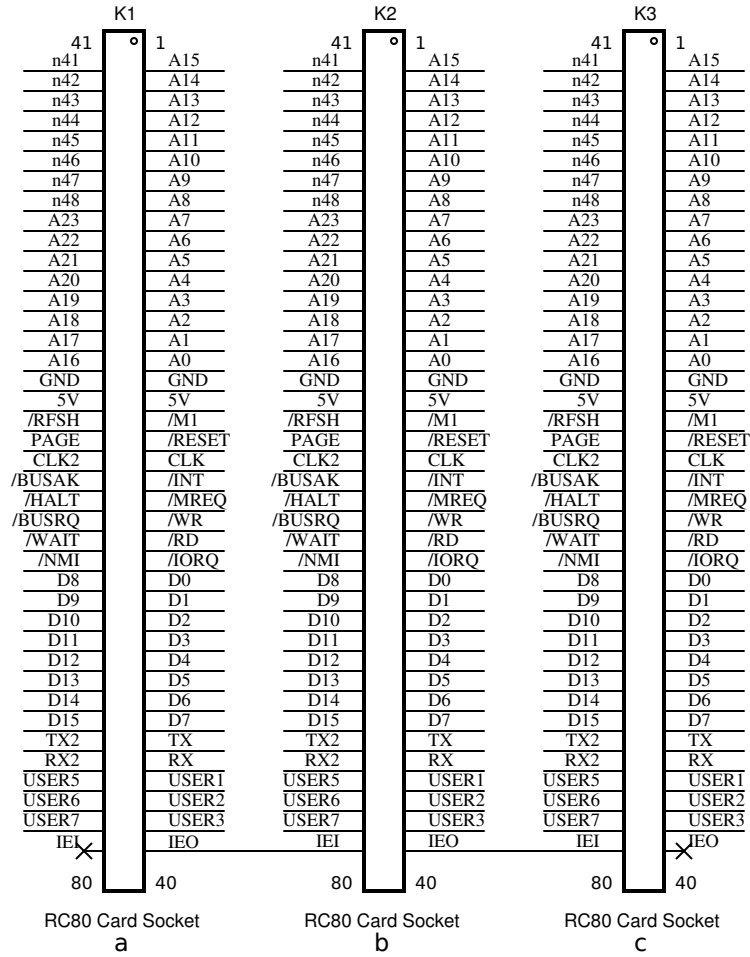


Power supply input instead of section plug.



RC80 (or RC2014/80) is an unofficial variant of the RC2014 bus. Two USER pins are committed to an interrupt daisy chain, while others can be optionally isolated. Signals A16 to A23 have been assigned, although there is nothing special about these so they can be used for any purpose.

TITLE: SC116: 3-slot Backplane		REV: 1.0
Date: 2018-10-11	Sheet: 1/1	
EasyEDA V5.5.12	Drawn By: Stephen C Cousins	